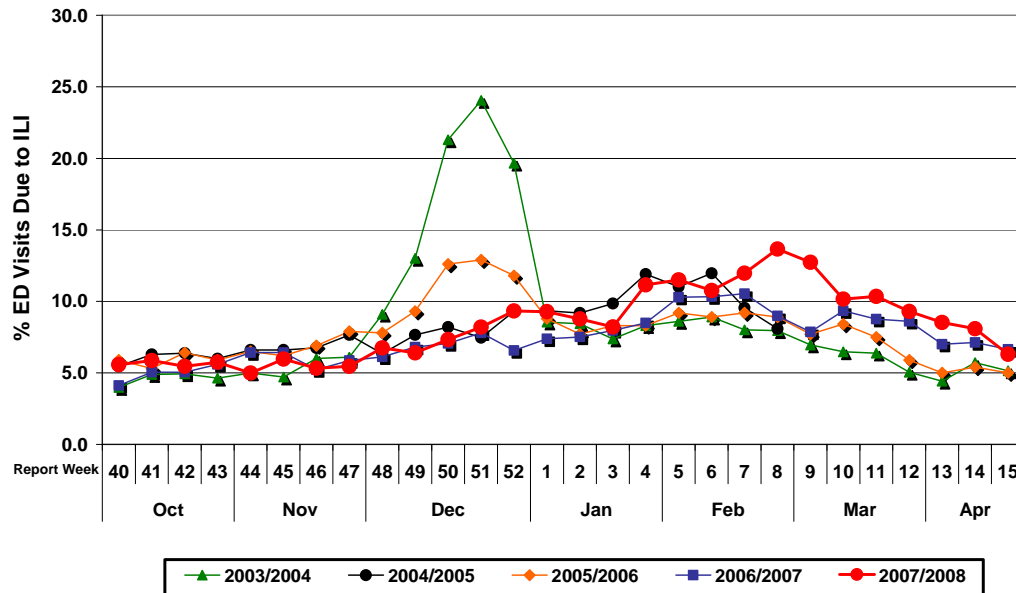


# Influenza Season 2007/08 – Riverside County, California

## Influenza Surveillance Weekly Update

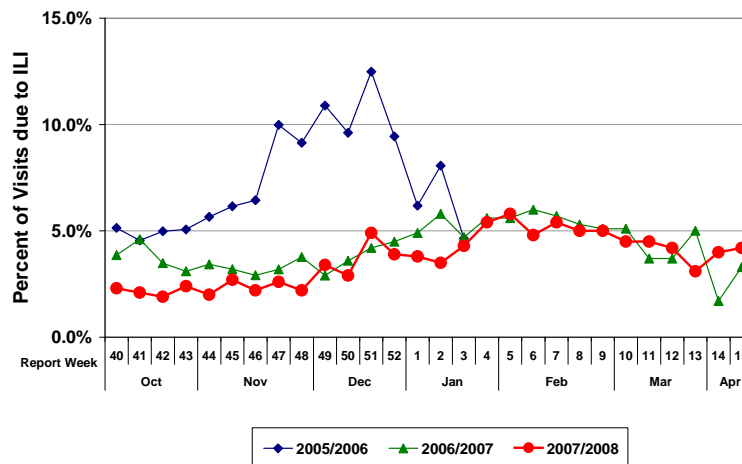
### Week ending April 12, 2008

**Percent of Emergency Department (ED) Visits  
Due to Influenza-Like Illness (ILI), Riverside County**



During week 15, 6.3 percent of visits to Riverside County emergency departments were related to influenza-like illnesses. Compared to historical data, this is within normal limits.

**Percent of Total Visits at Physician Sentinel Sites due to Influenza-like  
Illness (ILI), Riverside County: 2007/08 Influenza Season**



During week 15, 4.2 percent of visits to physician sentinel sites were related to influenza-like illnesses. Compared with historical data, this is within normal limits.

**School Absenteeism:** As of week 15, 10.1%\* of students at sentinel school sites were absent due to illness.  
\*Data from schools who specifically report absence due to illness

#### Additional Resources

Riverside County Influenza Vaccine Locations: Call 1-888-246-1215

or visit <http://www.rivco-diseasecontrol.org/pdf/flu.pdf>

State of California Influenza Information:

<http://www.dhs.ca.gov/ps/dcdc/vrdl/html/flu/fluintro.htm>

United States Influenza Information:

<http://www.cdc.gov/ncidod/diseases/flu/weekly.htm>